



SUBSCRIPTIONS 2022

As you will be aware 2021 subscriptions (paid earlier this year) for HQ, Anglia and Hertfordshire was £35.00. The District and Division amount was in addition to this. You will be aware that the HQ amount is increasing from £17.70 to £21.00. The Anglia amount is remaining the same. Last year, the Hertfordshire amount was reduced to £7.30 (from £9.00 in 2019) to reflect the difficulties of meeting in 2020 and early 2021.

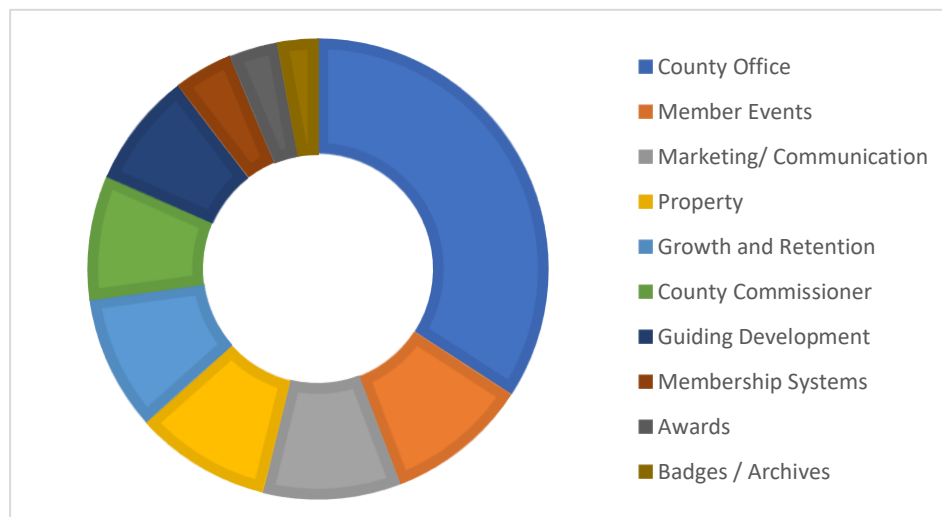
The County Trustees have looked to reduce expenditure as much as possible whilst still being able to provide the opportunities for the Rainbows, Brownies, Guides, Rangers, Young Leaders and Adult volunteers that we always have. Unfortunately, with our reduction in total members from 11,100 in 2019 to 7,700 in 2021, we have had to increase the County subscription amount to £8.50. Whilst this is an increase from the 2020 amount, it is still lower than the 2019 amount and has been done by using some of our reserves. It is expected that there will be an increase to the normal level of around £9-£12 per member in 2023, although we will still try to keep this as low as possible.

Our current membership numbers are 9,300 so things are getting better but we do expect a reduction to the numbers as we get closer to February. Please can we remind you not to remove any members from your unit unless they have actually left as this generally leads to an increase in the future subscription amount for everyone else. Financial support is available so please do ask if you need any help.

The total subscription (excluding District and Division amounts) will be as follows:

	2021	2021
HQ	£17.70	£21.00
Anglia	£10.00	£10.00
Hertfordshire	£7.30	£8.50
Total	£35.00	£39.50

How we use your subscription



County Office - The Office help us to do our best by assisting us with communication across the County, administration for events and our County Centre, meet our objectives to the Charities' Commission and many other things.

Marketing and PR - This helps us promote Girlguiding Hertfordshire through our website and other events.

Property - Although the property generates income, there is further financial support required to support our County Centre at Cottered.

Guiding Development - Including resources for our new leaders, Safe Space trainings and County Training Days.

Membership Systems - This is for trainings on Go for all leaders and support for our District and Division Commissioners as well as purchase of Service awards.

County Commissioner - The County Commissioner's budget for leading our County, developing our strategy, supporting all our leaders and visiting units, when this is allowed again. This also covers the County Bursary for anyone in the County who may need some additional funding for an event or other expenses.

Growth and Retention - This funding supports the team to help us promote the County and look for ways to grow our membership of volunteers and girls and retain current leaders and girls.

Member Events - Grants for International events, Outdoor County-run activity days, camps and the Youth Opportunities team are all included in this budget.

Awards - Our annual awards evening is the County's way to say thank you to our volunteers for their service or those who have given outstanding service within the County.

Archives - This money is for preserving our Girlguiding history and documents within the County.

We hope this more detailed update has been helpful this year and will enable you to plan for the rest of the year and next year.

Elaine Wilson
County Treasurer