

SUBSCRIPTIONS 2023

You will be aware of the change in subscriptions for 2023 as set by Girlguiding HQ from £21 to £28 per member. Our region, Anglia will be adding £12.50 per member to help cover the great opportunities and support that they give.

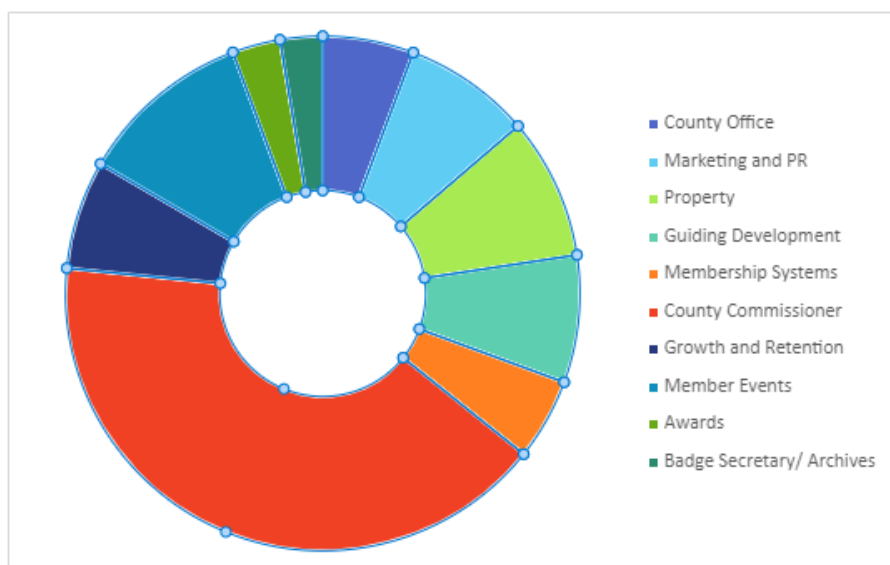
The county Trustees have looked to reduce expenditure as much as possible whilst still being able to provide the opportunities for the Rainbows, Brownies, Guides, Rangers, Young Leaders and Adult volunteers that we always have. They also appreciate the cost of living crisis is placing lots of families in financial difficulties and the increase at other levels, whilst budgeted may also cause hardship to some units. We have, therefore kept the county subscription at £8.50 this year, the same as 2022. Girlguiding Hertfordshire are making a contribution of almost £5 to each member from our reserves in order to keep the subscription at this level. Please be aware that it is expected that there will be an increase to around £10-£13 per member as a Hertfordshire levy in 2024 so please ensure you budget for this over the next year. Girlguiding HQ will shortly be sharing their 2024 subscription which will help units to budget.

Our current membership numbers are 9,400 so this is broadly the same as last year at this time but we do expect a reduction to the numbers as we get closer to February. Please can we remind you not to remove any members from your unit unless they have actually left as this generally leads to an increase in the future subscription amount for everyone else. Financial support is available so please do ask if you need any help.

The total subscription (excluding district and division amounts) will be as follows:

	2022	2023
HQ	£21.00	£28.00
Anglia	£10.00	£12.50
Hertfordshire	£8.50	£8.50
Total	£39.50	£49.00

How we use your subscription



County Office - The Office help us to do our best by assisting us with communication across the county, administration for events and our County Centre, meet our objectives to the Charities' Commission and many other things.

Marketing and PR - This helps us promote Girlguiding Hertfordshire through our website and other events.

Property - Although the property generates income, there is further financial support required to support our County Centre at Cottered.

Guiding Development - Including resources for our new leaders, Safe Space trainings and County Training Days.

Membership Systems - This is for trainings on GO for all leaders and support for our district and division commissioners as well as purchase of Service awards.

County Commissioner - The County Commissioner's budget for leading our county, developing our strategy, volunteer support and visiting units and events. This also covers the County Bursary for anyone in the county who may need some additional funding for an event or other expenses.

Growth and Retention - This funding supports the team to help us promote the county and look for ways to grow our membership of volunteers and girls and retain current leaders and girls.

Member Events - Grants for International events, county-run activity days, camps and the Youth Opportunities team are all included in this budget.

Awards - Our annual awards evening is the county's way to say thank you to our volunteers for their service or those who have given outstanding service within the county.

Archives - This money is for preserving our Girlguiding history and documents within the county.

We hope this more detailed update has been helpful this year and will enable you to plan for the rest of the year and next year.

Elaine Wilson
County Treasurer